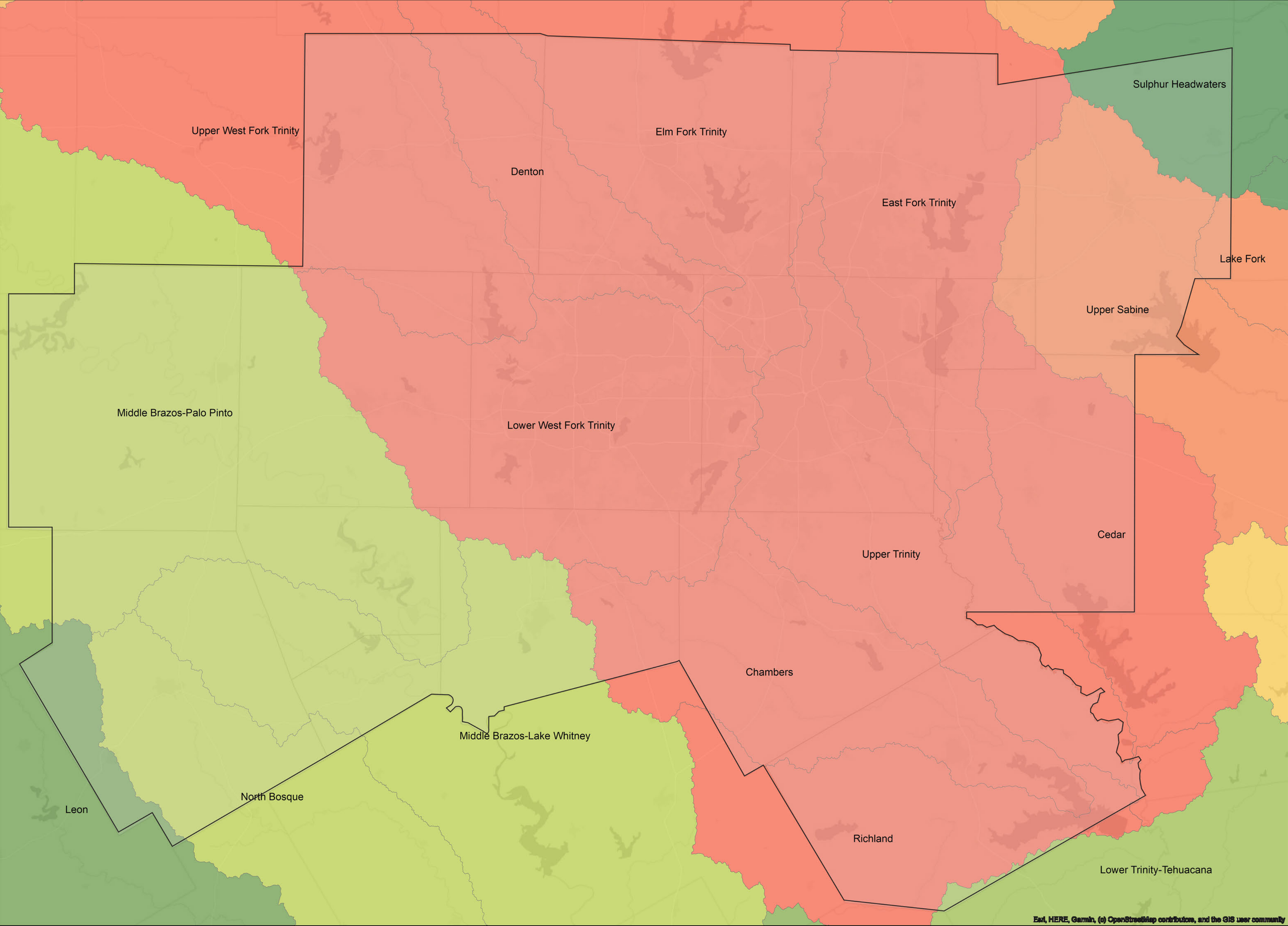


DFW MAJOR RIVER BASINS



PI: Adrian Parr
Research team: Mona Hashemi,
Alan Klein, Rebecca Boles



United Nations
Educational, Scientific and
Cultural Organization



UNESCO Chair on
Water and Human Settlements,
University of Texas at Arlington

2-1- DFW MAJOR RIVER BASINS

The map illustrates significant river basins and their subbasins in the DFW area. The Trinity Basin is the largest river basin whose watershed site is entirely within the State of Texas and the third largest river in Texas by average flow volume. The Dallas-Fort Worth metropolitan area is in the upper basin. From its Elm and West Forks near Dallas's confluence, the Trinity River flows to Trinity Bay, which drains to the Gulf of Mexico. Smaller streams within the basin include the Clear, East, Elm, and West Forks of the Trinity River and Cedar, Chambers, and Richland creeks. The data is attained from the North Central Texas Council of Governments (NCTCOG) website. (<http://data-nctcoggis.opendata.arcgis.com/datasets/basins-hu6>, Retrieved August 2019)