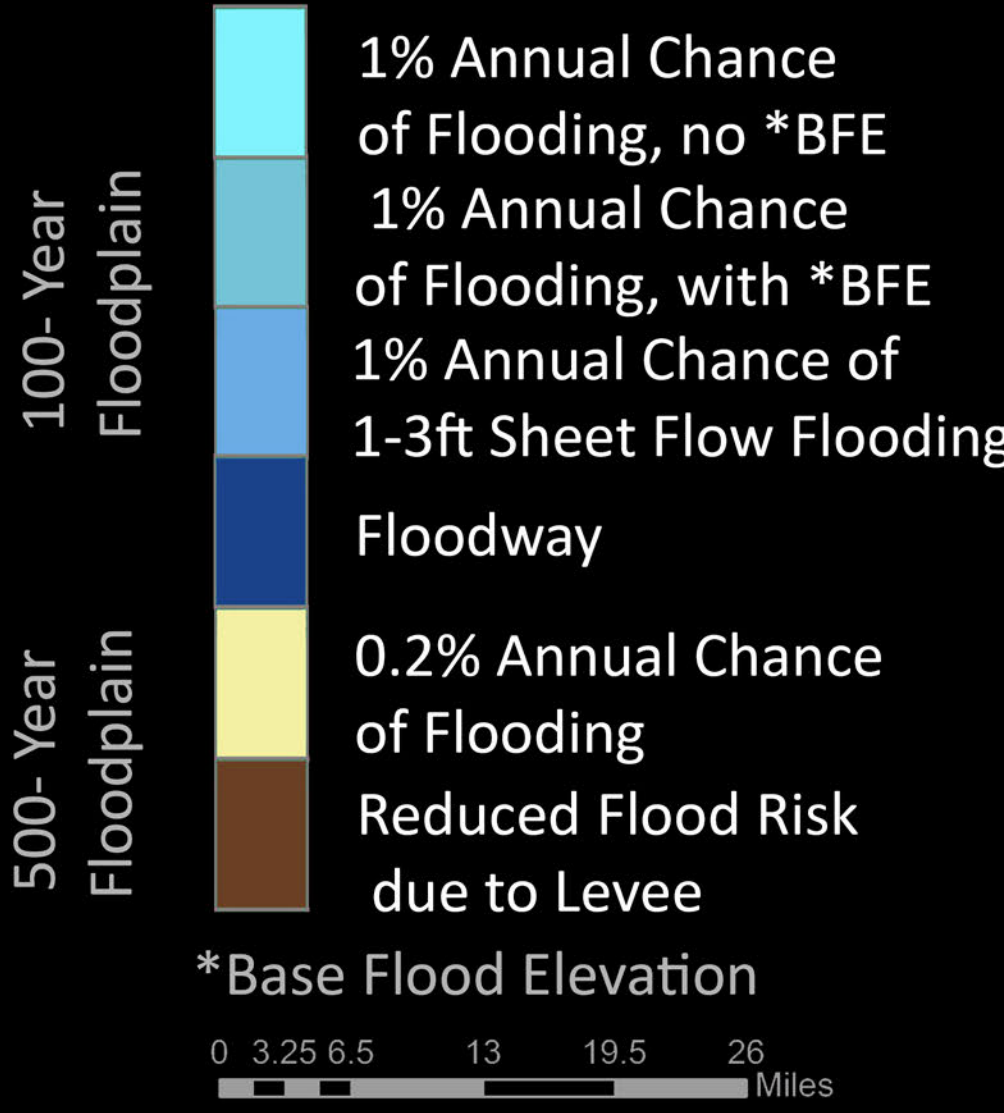
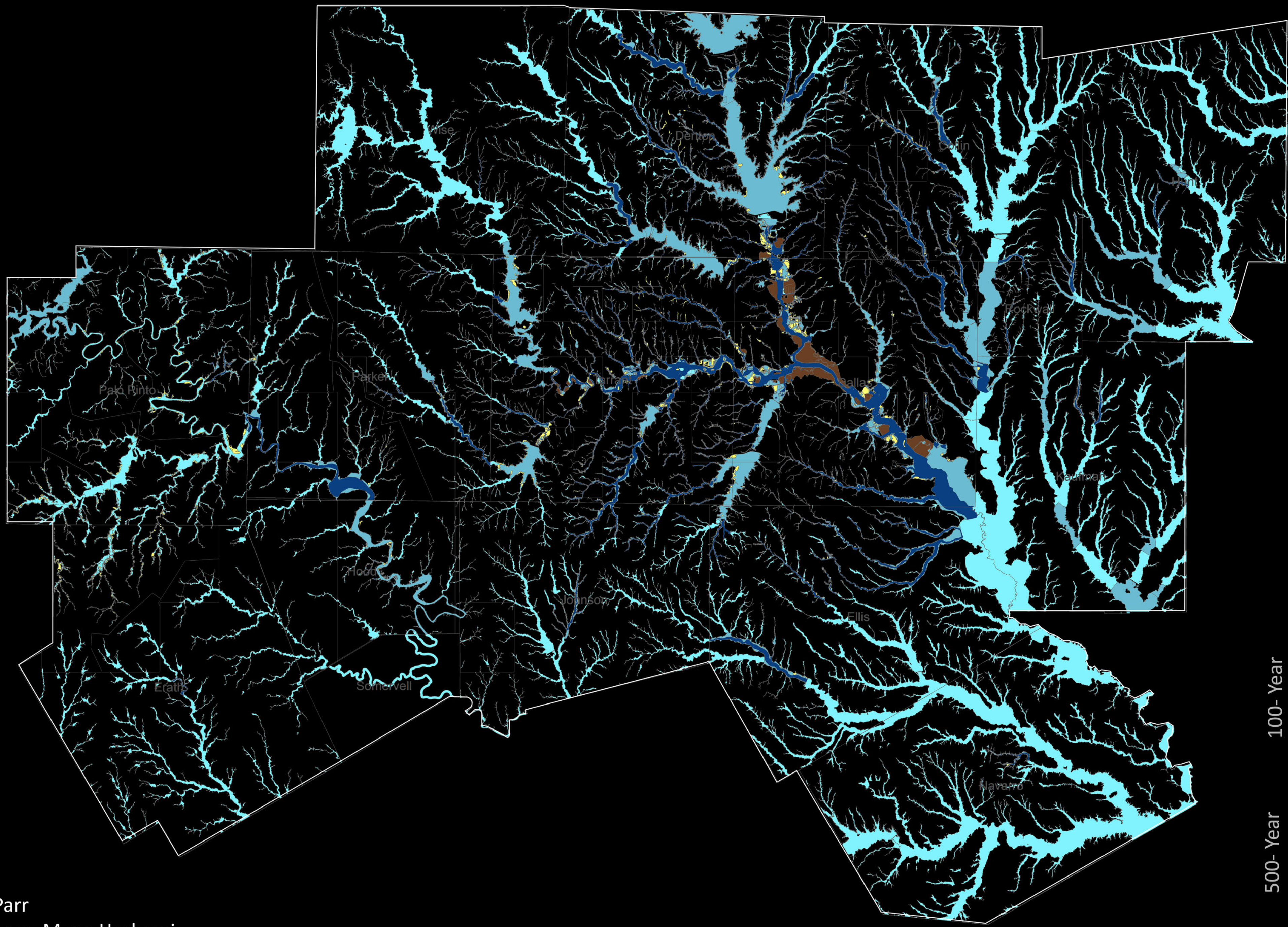


# DFW FLOOD ZONES



IUS PI: Adrian Parr  
Research team: Mona Hashemi,  
Alan Klein, Rebecca Boles





## -2-DFW FLOOD ZONES

Flood zones are geographic areas that the Federal Emergency Management Agency has defined according to varying flood risk levels. These zones are depicted on a community's Flood Insurance Rate Map (FIRM) or Flood Hazard Boundary Map. Each zone reflects the severity or type of flooding in the area. Moderate to low-risk areas is the space between the limits of the 100 - year and 500-year floods. These are used to designate base floodplains of lesser hazards, such as areas protected by levees from 100 year flood, shallow flooding areas with average depths of less than one foot, or drainage areas less than 1 square mile.

High-risk areas are areas with a 1% annual chance of flooding. There are some high-risk areas where the base flood elevations (BFE) are provided, and some places where detailed analyses are not, and depths or base flood elevation are not shown. There is a "Regulatory Floodway," which is the channel of a river or other watercourse. The adjacent land areas are reserved to discharge the base flood without increasing the water surface elevation more than a designated height.

Communities must regulate development in these zones to ensure that there are no increases in upstream flood elevations. The map covers both moderate to low risk and high-risk areas in the DFW. It could help regulate the future development of watershed areas and better manage the metroplex water systems. The data is attained from the Federal Emergency Management Agency (FEMA) website. (<https://msc.fema.gov/portal/home>, Retrieved Jun 2019)

The overlay of map 2-2 onto map 2-1 shows the spatial relationship between flood zones and the major basins in which they reside.